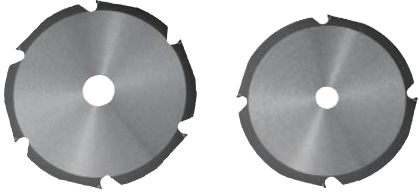


CSPCD - Polycrystalline Diamond Blades

Suitable for cutting fibre cement boards and other ultra tough materials such as Corian, HardiePlank, Minerit and Eternit.

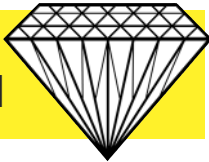
Also extremely effective on aggregate decking, composite decking, softwood and hardwood.



CODE	Ø	Teeth	Body	Kerf
CSPCD160/4	160mm	4	1.6mm	2.2mm
CSPCD165/4	165mm	4	1.6mm	2.2mm
CSPCD184/6	184mm	6	1.6mm	2.2mm
CSPCD190/6	190mm	6	1.6mm	2.2mm
CSPCD216/6	216mm	6	1.6mm	2.2mm
CSPCD230/6	230mm	6	1.6mm	2.2mm
CSPCD250/6	250mm	6	1.6mm	2.2mm
CSPCD300/8	300mm	8	1.8mm	2.4mm



Polycrystalline Diamond Tipped



Positive Hook Angle



Flat Top Sharpening



Polycrystalline Diamond (CSPCD) tipped blades are manufactured to offer an extra aggressive, more durable option when cutting through ultra tough materials such as fibre cement board.

The blades feature fewer teeth than a standard TCT blade which offers a more aggressive cut.

This allows for extra large gullets to improve waste removal to offer a cleaner cut.

The carbide tips have a positive angle and flat tops.

We also offer a 216mm which features a 0° hook angle for safe use on chop saws.

The tips are all coated in polycrystalline diamond which allows them to tackle the ultra tough materials whilst still being far more durable than normal circular saw blades.

CSPCD Blades will last up to 40x as many cuts as a standard carbide tipped saw blade.

Blades available from 160mm through to 300mm diameter for a wide range of machines, from portable saws to table saws.